

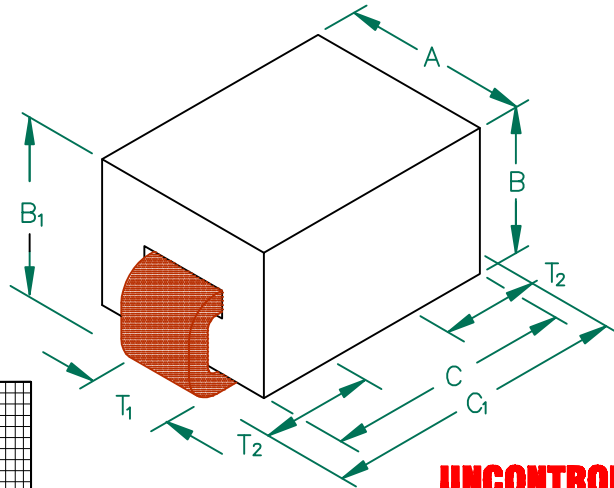
**PHYSICAL DIMENSIONS:**

- A 3.05 [.120] + 0.08 [.003]
- B 2.54 [.100] + 0.08 [.003]
- B<sub>1</sub> 3.05 [.120] + MAX
- C 4.06 [.160] + 0.10 [.004]
- C<sub>1</sub> 5.08 [.200] + MAX

**WIRE DIMENSIONS:**

- T<sub>1</sub> 1.27 [.050] + REF
- T<sub>2</sub> 1.52 [.060] + 0.51 [.020]

# 35F0121-0SR-10



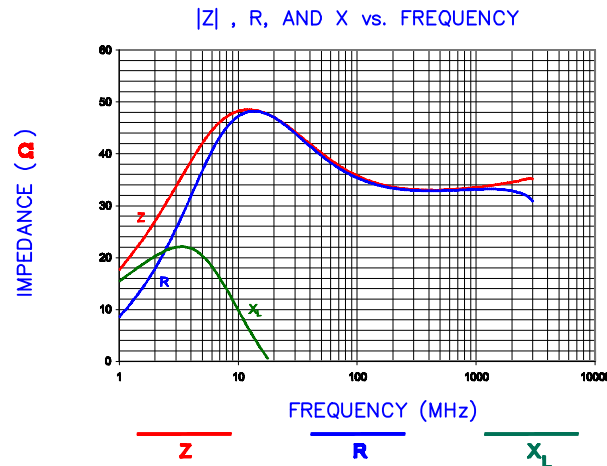
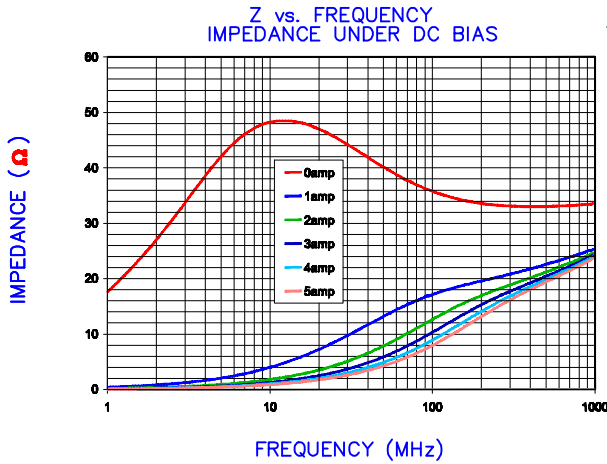
**UNCONTROLLED DOCUMENT**

**ELECTRICAL CHARACTERISTICS:**

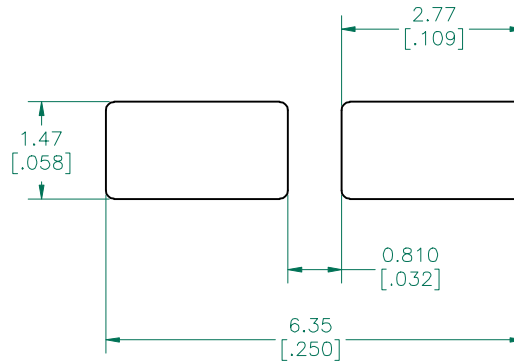
	Z (Ω) @		DCR (Ω)	Rated Current
	1MHz	10MHz		
Nominal	-	42		
Minimum	14	34		
Maximum	-	-	.00075	10,000 mA

NOTES: UNLESS OTHERWISE SPECIFIED

1. TAPED AND REELED per CURRENT EIA SPECIFICATIONS 13" REELS, 2500 PCS/REEL.
2. COMPONENTS SHOULD BE ADEQUATELY PREHEATED BEFORE SOLDERING.
3. REF. CARRIER TAPE SPECIFICATION # CART121-03.
4. TERMINATION FINISH IS 100% TIN.

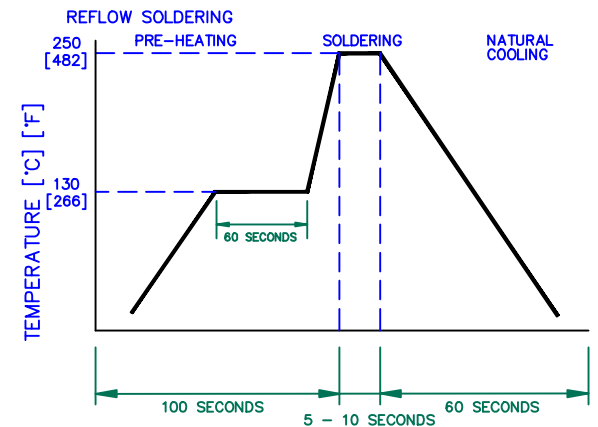


**LAND PATTERNS FOR REFLOW SOLDERING**



(For wave soldering, add 0.762 [.030] to this dimension.)

**RECOMMENDED SOLDERING CONDITIONS**



DIMENSIONS ARE IN mm (INCHES).				THIS DOCUMENT CONTAINS INFORMATION WHICH IS PROPRIETARY AND CONFIDENTIAL TO STEWARD. NO PRODUCTION OR PUBLICATION OF THIS DOCUMENT IN WHOLE OR IN PART SHALL BE MADE WITHOUT WRITTEN AUTHORIZATION FROM STEWARD.			
				<b>Steward</b> <small>a unit of Laird</small>			
PROJECT/PART NUMBER:				REV	PART TYPE:	DRAWN BY:	
C	UPDATE LANDPATTERN	08/09/07	JRK	35F0121-0SR-10	C	ASSEMBLY	JRK
B	ADD ROHS SYMBOL UPDATE LOGO	05/04/07	JRK	DATE: 5/26/04	SCALE: NTS	SHEET:	
A	ORIGINAL DRAFT	5/26/04	JRK	CAD #	TOOL # H0121	2 of 3	
REV	DESCRIPTION	DATE	INT	35F0121-1SR-10-C-2			